



MACHINE CONSTRUCTION
AGRICULTURE IRRIGATION EARTH MOVING

AP LEVELLING MACHINES



high accuracy levelling

Basic levellers

This basic leveller is a simple but effective levelling machine, perfectly suitable for the levelling of pavements, drives, squares etc. The compact construction of this leveller makes it possible to transport a mini wheel loader along with the leveller on a trailer.

The AP basic leveller comes standard with the AP basic control box, proportional control and two stainless steel receiver masts. The machine is equipped with a torsion plate on the front that determines the height and guarantees levelling to millimeter accuracy.

Driving backwards the machine levels the subsoil at the desired height or slope. Hereafter the subsoil is free of tracks and one can start paving immediately.

Standard equipment

- Removable Hardox knives
- Removable Hardox bottom
- 2 Stainless steel receiver masts with scaling
- Height control through Hardox torsion plate
- Dual hydraulic block 100% proportionally controlled and accumulator
- Double functioning cylinders
- Fixed sides
- Pivot point fitted with bronze bushings
- AP basic control box with height indication and laser receiver cables

Options

- Extendable masts with scaling
- Machine receivers (brand and type of choice)
- Quick attachments (screwable)
- APMB-1 control box
- Sprayed in a color of choice



Technical specifications basic levellers

Type	Working width cm	Blade height cm	Weight kg
Basic LEV 1400	140	40	330
Basic LEV 1600	160	40	350
Basic LEV 1800	180	40	370
Basic LEV 2000	200	50	390
Basic LEV 2200	220	50	410

Requirements

- Power supply 1 x 12V
- 1 Double functioning hydraulic valve with free return flow
- Floating position on wheel loader
- Necessary hydraulic power : 20 l./min. - 160/180 bar (max. 80 l./min. - 200 bar)



Levellers - BullBlaster

The leveller is used for the levelling of all kind of materials on roads, parkings, squares etc. before laying the paving stones and for the levelling of planes under slope(s) for water drainage to the draw-wells. The leveller is suitable for wheel loaders, skid steers or tractors.

The rear side of the leveller is equipped with a cutting knife, the front side is provided with a finishing plate with bucket (for transportation of material). The cutting knife and the finishing plate are controlled separately. The doors, hydraulically controlled from the cabin, enable the machine to level closely to any edge.

The 100% proportional control offers high accuracy levelling. No more over- or undershooting when controlling the blade.

Standard equipment

- Removable Hardox knives
- Removable Hardox bottom
- Hydraulic doors
- Quadruple hydraulic block proportionally controlled
- Proportional control of the hydraulic doors
- APMB-1 control box
- 2 Stainless steel receiver masts L = 1800 mm

Options

- Extendable masts with scaling
- Topcon LS-B110 machine receivers
- AP slope sensor
- Topcon sonic tracker
- 3D, GPS or total station
- Sprayed in a color of choice
- Height indication on APMB-1 box
- Vertical indication on APMB-1 box
- Quick attachments



Technical specifications BullBlaster levellers

Type	Working width cm	Max. width with doors open cm	Blade height cm	Weight kg
M-LEV 1200	120	163	40	410
M-LEV 1400	140	183	40	425
LEV 1200	120	196	52	475
LEV 1400	140	216	52	525
LEV 1600	160	236	52	590
LEV 1800	180	256	52	640
LEV 2000	200	293	65	920
LEV 2200	220	313	65	980
LEV 2450	245	333	65	1040
LEV2650	265	353	65	1080
LEV 2850	285	373	65	1150

Requirements

- Power supply 1 x 12V
- 1 Double functioning hydraulic valve with free return flow
- Floating position on wheel loader / tractor
- Necessary hydraulic power : 20 l./min. - 160/180 bar (max. 80 l./min. - 200 bar)



BullBlaster levellers

Powerblades

The AP Powerblade is designed to build in large amounts of material and directly level it out to the on grade line. The Powerblade functions best when combined with a skid-steer loader but can also be used with a wheel loader.

The compact construction provides a high stability and optimal control. The doors, hydraulically controlled from the cabin, enable the machine to level closely to any edge.

Because both the proportional valve block and the cables are installed on the Powerblade the machine is simply and quickly ready for use. Furthermore it enables a flexible switch from loader.

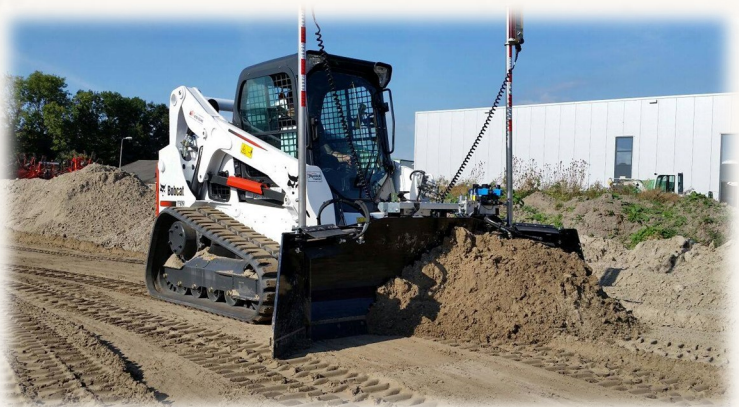
Highly accurate in combination with laser control. By using the APMB-1 machine control it is possible to work with the easy to operate “on grade” line adjustment. The on grade level can be determined from the cab. At some skid-steer loaders the control of the Powerblade can be integrated in the joysticks.

Standard equipment

- Removable Hardox knives
- Double functioning cylinders
- Quadruple hydraulic block proportionally controlled
- Hydraulic doors
- APMB-1 control box
- Complete wiring

Options

- Extendable masts with scaling
- Topcon LS-B110 machine receivers
- Topcon sonic tracker
- 3D, GPS or total station
- Special version for working in rocky conditions with cylinder protection and safety valves
- AP slope sensor
- Sprayed in a color of choice
- Finishing plate / bucket
- Vertical indication on APMB-1 box
- Height indication on APMB-1 box
- Bobcat/Cat interface
- Hydraulic doors on back side



Technical specifications Powerblades

Type	Working width cm	Max. width with doors open cm	Blade height cm	Weight kg
PB 1200	120	200	52	350
PB 1400	140	220	52	380
PB 1800	180	270	68	595
PB 2000	200	390	68	620
PB 2200	220	310	68	645
PB 2450	245	335	68	665
PB 2650	250	340	68	700
PB 2850	285	385	80	850

Requirements

- Power supply 1 x 12V
- 1 Double functioning hydraulic valve with free return flow
- Floating position on wheel loader (if used with finishing plate)
- Necessary hydraulic power : 20 l./min. - 160/180 bar (max. 80 l./min. - 200 bar)



Push-pull levellers

The Push-Pull Leveller is especially designed for doing 2 jobs with 1 machine. You can build in materials pushing forwards and thereafter you can level your plan driving backwards. Through a sensor the control knows in which direction you are operating and will automatically change the steering from left to right and vice versa. It is highly accurate in its finish and will deliver the perfect design for you. The Push-Pull leveller can be coupled to skid steers or wheel loaders.

The AP Push-Pull leveller is in many ways a combination of the Powerblade and the BullBlaster leveller, the advantages of this machines have been brought together.

Standard equipment

- Removable Hardox knives
- Removable Hardox bottom
- Hydraulic doors
- Quadruple hydraulic block proportionally controlled, including accumulator and cables
- Sensor for backwards/forwards driving
- APMB-1 control box
- 2 Stainless steel receiver masts L = 1800 mm

Options

- Extendable masts with scaling
- Topcon LS-B110 machine receivers
- AP slope sensor
- 3D, GPS or total station
- Quick attachments
- Topcon sonic tracker
- Sprayed in a color of choice
- Vertical indication on APMB-1 box
- Height indication on APMB-1 box



Technical specifications Push-pull levellers

Type	Blade height cm	Working width cm	Max. width with doors open cm	Weight kg
Push-Pull 1400	52	140	220	650
Push-Pull 1600	52	160	240	675
Push-Pull 1800	52	180	260	700
Push-Pull 2000	52	200	280	740
Push-Pull 2200	52	220	300	775
Push-Pull 2450	65	245	335	850
Push-Pull 2650	65	265	355	900

Requirements

- Power supply 1 x 12V
- 1 Double functioning hydraulic valve with free return flow
- Floating position on wheel loader
- Necessary hydraulic power : 20 l./min. - 160/180 bar (max. 80 l./min. - 200 bar)



Push-pull levellers

3D levellers

The AP 3D leveller is especially designed for 3D control (Total station or GPS). The leveller works both forwards (building in of materials) and backwards (levelling).

It is equipped with a finishing plate and has a turning point for slope control and height control over the finishing plate. It is highly accurate in its finish and will deliver the perfect design for you.

Furthermore it is provided with an intelligent slope sensor that, if necessary, corrects the leveller at a high reaction speed.

The types

The 3D leveller **with turntable** is suitable for big(ger) wheel loaders that can turn the leveller without hitting the wheel loader. It is extremely easy to change from forwards to backwards levelling without getting out of the wheel loader.

The **Push-Pull** version is for tracked loaders or the smaller wheel loaders that cannot use the leveller with turntable, but is still able to work forwards and backwards.

Standard equipment

- Removable Hardox knives
- Removable Hardox bottom
- 5-Way (PP) / 6-way (TT) proportional hydraulic block incl. accumulator and cables
- Hydraulic doors
- Proportional control of the doors
- APMB-1 control box
- Sensor for backwards/forwards driving

Options

- 3D unlock code for Topcon, Trimble or Leica
- Extendable masts with scaling
- Sprayed in a color of choice
- Special version for working in rocky conditions with cylinder protection and safety valves
- 3D total station with MC2 sensor
- 3D single GPS with MC2 sensor
- All common quick attachments



3D leveller PP



3D leveller TT

Technical specifications 3D levellers

Type	Blade height	Working	Max. width with	Weight
3D-LEV 2000 PP	60	200	270	1200
3D-LEV 2000 TT	60	200	270	1600
3D-LEV 2200 PP	60	220	290	1300
3D-LEV 2200 TT	60	220	290	1700
3D-LEV 2450 PP	60	245	315	1425
3D-LEV 2450 TT	60	245	315	1825
3D-LEV 2650 PP	78	265	371,5	2150
3D-LEV 2650 TT	78	265	371,5	2525
3D-LEV 2850 PP	78	285	391,5	2350
3D-LEV 2850 TT	78	285	391,5	2700

¹ Weights are approximated, depending on options and quick attachments

Requirements

- Power supply 1 x 12V
- 1 Double functioning hydraulic valve with free return flow
- Floating position on wheel loader
- Necessary hydraulic power : 20 l./min. - 160/180 bar
(max. 80 l./min. - 200 bar)



About AP

In our modern building the machines are built from the beginning to the end. We consider quality of paramount importance. We have experienced employees, two fully automated welding robots, an automated warehouse, advanced sandblasting and spraying installations and a healthy amount of knowledge and enthusiasm.

Since 1979 years AP has specialised in the development and construction of **agricultural machines**, **irrigation machines** and **earth moving machines**. Our range of products is very diverse; through years of experience and intensive contact with dealers and users we continuously attempt to improve the machines and to meet the wishes of our customers.

Last but not least we have an excellent development department where customer specific products are designed and constructed.



MACHINE CONSTRUCTION
AGRICULTURE IRRIGATION EARTH MOVING

AP Machinebouw B.V.
Ambachtstraat 21
8313 AV RUTTEN NETHERLANDS
T 0031 - 527 618 246
info@apmb.nl
www.apmb.eu



Dream machine