



Welcome to the world of Pladdet!

We are the specialist in excavator attachments. We are a family owned company since 1943 with an outstanding reputation for producing high quality excavator attachments. One of our most successful products is the sorting and demolition grab. Due to its success and high demand in Europe we are now seeking distributors from all over the world.

Our grabs can be swiveled 360° for use in demolition, recycling, forestry, railway, industry, materials handling and a wide range of other applications.

The sorting grab is produced using quality components, such as Parker rotating engines, induction hardened pins and slewing ring for even the smallest sorting grab in order to have high rotating force. Pladdet is located near important harbors such as Antwerp and Rotterdam. Due to this we are able to guarantee a short delivery time to other harbors worldwide.

We hope you enjoy reading through this brochure and are looking forward to establish a long and successful relationship with you.

Jonathan de Putter
CEO

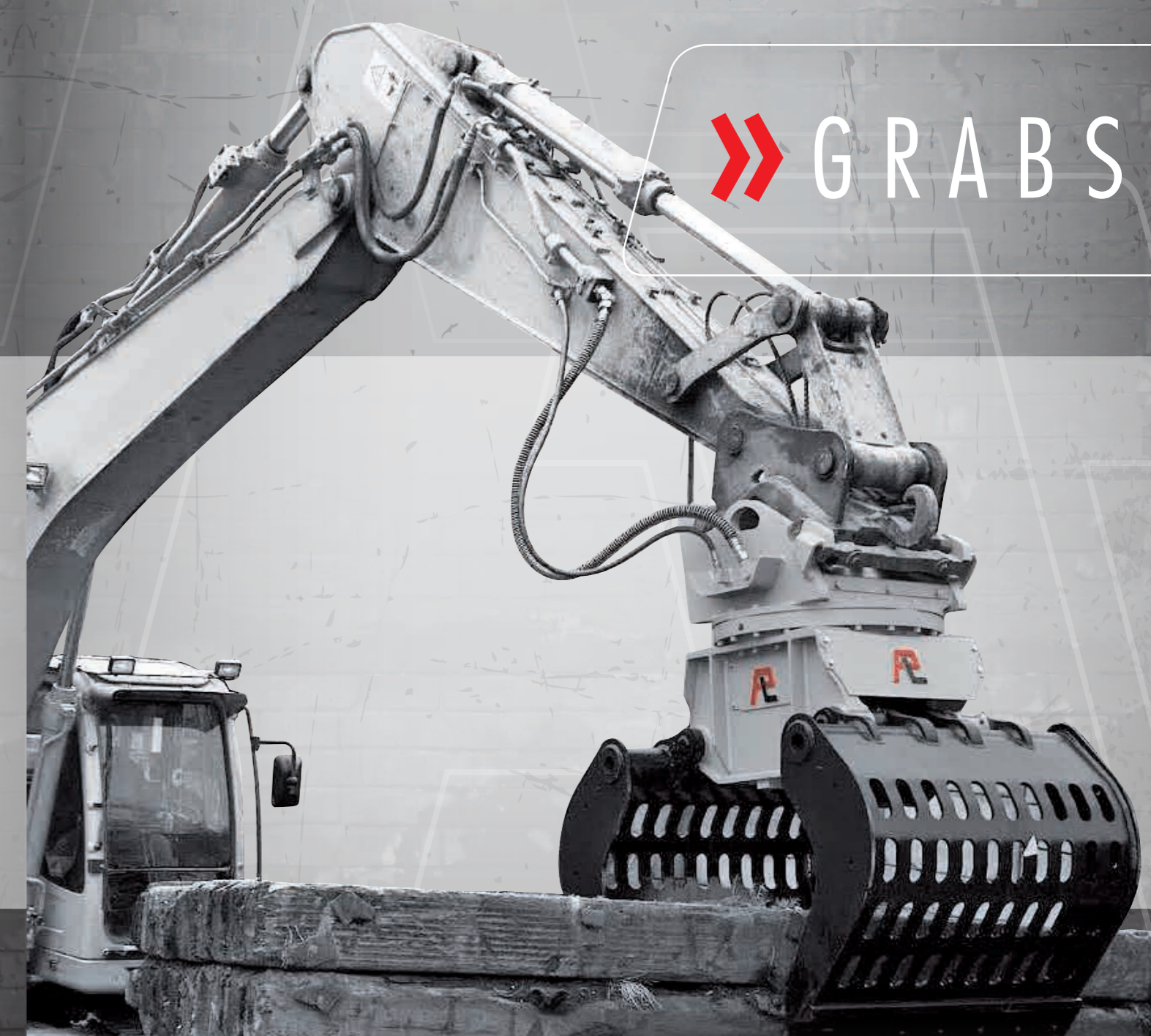


Belgium | Germany | Sweden | USA | Canada | Colombia | South Korea
Denmark | England | Israël | Switzerland | Austria | Italië | Australia



Pladdet

GRABS



GRABS ROTATION



Pladdet



visiting address:
Pladdet Attachments
Paulinaweg 6-10
4521 RE Biervliet
The Netherlands

post address:
Pladdet Attachments
P.O. box 2
4520 AA Biervliet
The Netherlands

Phone 0031 115 48 13 51
Fax 0031 115 - 48 20 54

Mail: info@pladdet.nl
Website: www.pladdet.biz



Why a Pladdet grab?

- Engineered and produced in the Netherlands
- Made out of high-quality materials (Hardox® and Weldox®)
- Induction hardened pins
- Extremely high closing force BY SMART DESIGN
- Extremely high rotating force BY SLEWING RING
- Turnable blades (3x)
- Endless 360° rotating with 2 Parker® motors (from PRG3)
- Easy maintenance for the operator
- Robust housing

Product information

Type: (rotation)	Machine-range (ton)	Weight* (kg)	Height (mm)	Width (mm)	Max. spread (mm)	Volume (liter)	Closing force (kn)	Work pressure rotation (bar)	Oilflow rotation (max) (liter/min.)	Work pressure (open / close) (bar)	Oilflow (liter/min.)
PRG0-30	0.7 – 1.4	65	600	300	600	30	6	150	5	300	15
PRG1-70	1.5 – 4	130	760	400	900	70	18	150	10	300	25
PRG1-100	1.5 – 4	145	760	550	900	100	18	150	10	300	25
PRG2-150	4 – 9	293	830	500	1500	150	24	150	15	300	40
PRG2-200	4 – 9	311	830	600	1500	200	24	150	15	300	40
PRG2-300	4 – 9	357	830	850	1500	300	24	150	15	300	40
PRG3-400	12 – 20	693	1000	700	1900	400	46	210	25	350	120
PRG3-500	12 – 20	715	1000	850	1900	500	46	210	25	350	120
PRG3-600	12 – 20	745	1000	1050	1900	600	46	210	25	350	120
PRG3-700	12 – 20	767	1000	1200	1900	700	46	210	25	350	120
PRG4-700	18 – 32	1230	1250	950	2100	700	84	210	35	350	160
PRG4-800	18 – 32	1300	1250	1100	2100	800	84	210	35	350	160
PRG4-900	18 – 32	1370	1250	1250	2100	900	84	210	35	350	160
PRG4.5-1000	28 – 38	2200	1800	1200	2300	1300	90	210	35	350	160
PRG4.5-1300	28 – 38	2400	1800	1500	2300	1000	90	210	35	350	160
PRG5-1000	32 – 50	2750	1720	1200	2300	1000	90	210	35	350	240
PRG5-1100	32 – 50	2850	1720	1300	2300	1100	90	210	35	350	240
PRG5-1300	32 – 50	2970	1720	1500	2300	1300	90	210	35	350	240

* Weight and height is excl. additional topplate

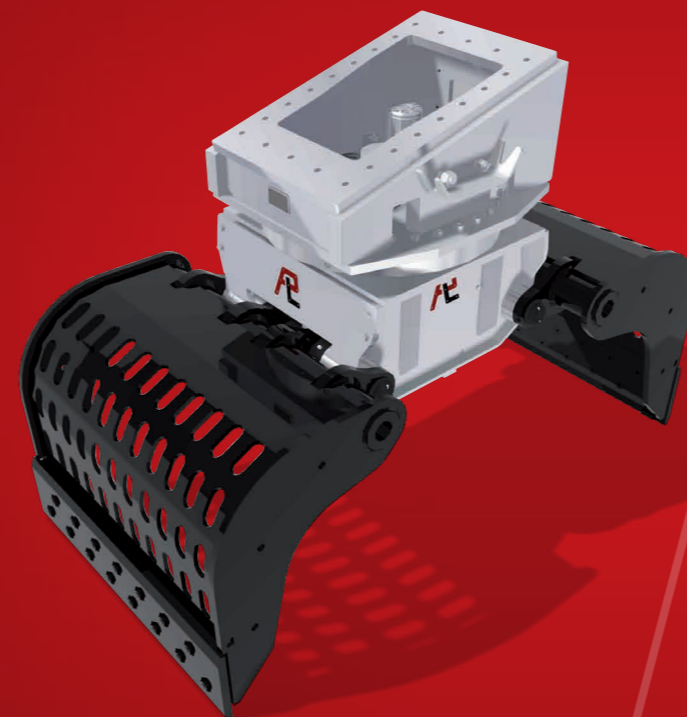
Type: (NO-rotation)	Machine-range (ton)	Weight* (kg)	Height (mm)	Width (mm)	Max. spread (mm)	Volume (liter)	Closing force (kn)	Work pressure (bar)	Oilflow (open / close) (liter/min.)
PG0-30	0.7 – 1.4	65	550	300	600	30	6	300	15
PG1-70	1.5 – 4	130	760	400	900	70	18	300	25
PG1-100	1.5 – 4	145	760	550	900	100	18	300	25
PG2-150	4 – 9	293	830	500	1500	150	24	300	40
PG2-200	4 – 9	311	830	600	1500	200	24	300	40
PG2-300	4 – 9	357	830	850	1500	300	24	300	40
PG3-400	12 – 20	693	1000	700	1900	400	46	350	120
PG3-500	12 – 20	715	1000	850	1900	500	46	350	120
PG3-600	12 – 20	745	1000	1050	1900	600	46	350	120
PG3-700	12 – 20	767	1000	1200	1900	700	46	350	120
PG4-700	18 – 32	1230	1250	950	2100	700	84	350	160
PG4-800	18 – 32	1300	1250	1100	2100	800	84	350	160
PG4-900	18 – 32	1370	1250	1250	2100	900	84	350	160

Weight and height is excl. additional topplate

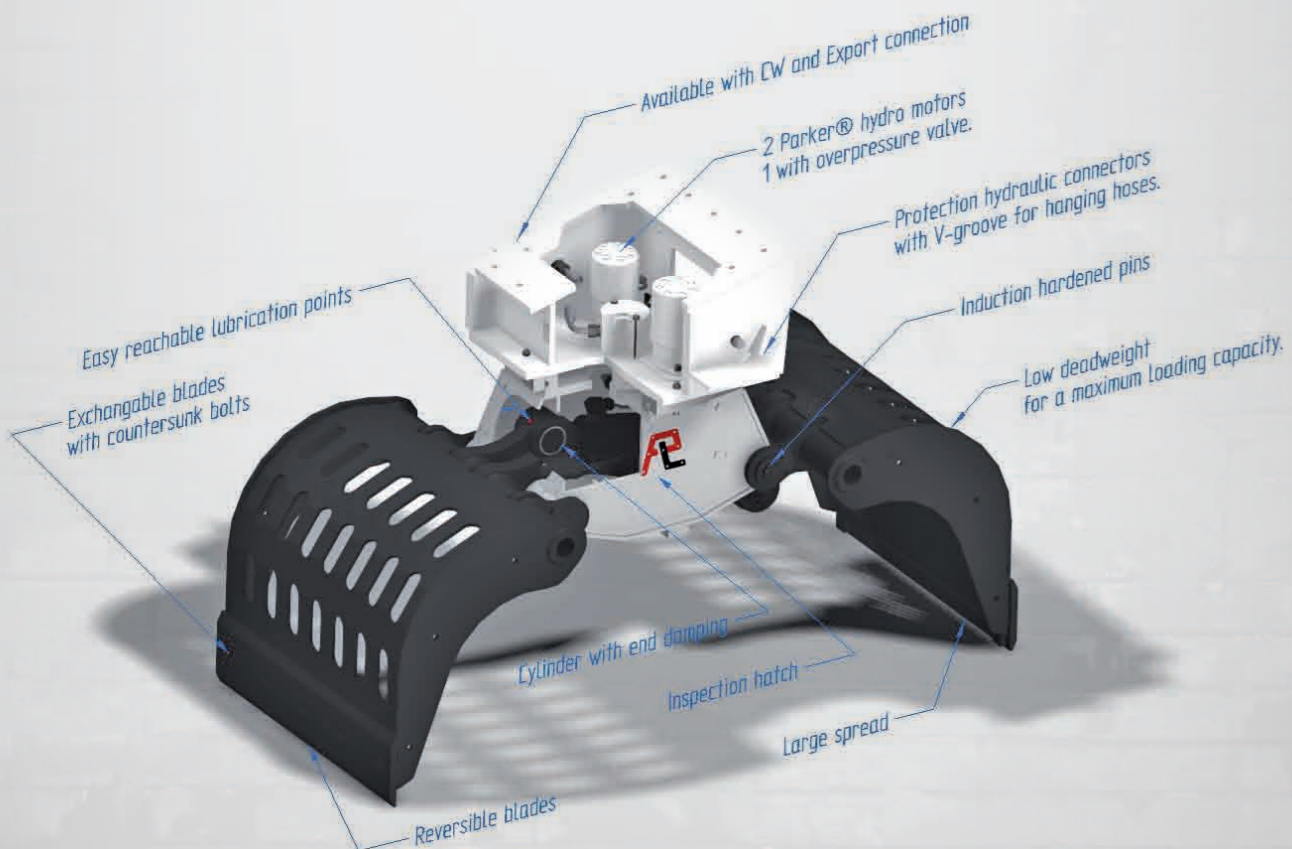
PG		
Type	Transport weight in kg	Packing size lxbxh in mm
PG0-30	96	600*1000*700
PG1-70	180	600*1000*960
PG1-100	195	600*1000*960
PG2-150	343	800*1600*1030
PG2-200	361	800*1600*1030
PG2-300	407	800*1600*1030
PG3-400	776	1100*2000*1200
PG3-500	798	1100*2000*1200
PG3-600	828	1100*2000*1200
PG3-700	850	1100*2000*1200
PG4-700	1333	1300*2200*1450
PG4-800	1403	1300*2200*1450
PG4-900	1473	1300*2200*1450



GRAB ROTATION



PRG		
Type	Transport weight in kg	Packing size lxbxh in mm
PRG0-30	106	600*1000*800
PRG1-70	215	600*1000*1015
PRG1-100	230	600*1000*1015
PRG2-150	400	800*1600*1200
PRG2-200	420	800*1600*1200
PRG2-300	465	800*1600*1200
PRG3-400	956	1100*2000*1430
PRG3-500	978	1100*2000*1430
PRG3-600	1008	1100*2000*1430
PRG3-700	1030	1100*2000*1430
PRG4-700	1563	1300*2200*1700
PRG4-800	1633	1300*2200*1700
PRG4-900	1703	1300*2200*1700
PRG4.5-1000	2325	1550*2300*1950
PRG4.5-1300	2525	1550*2300*1950
PRG5-1000	2895	1550*2300*1950
PRG5-1100	2995	1550*2300*1950
PRG5-1300	3115	1550*2300*1950



MARINE ENGINEERING



WASTE HANDLING



CLEANING UP



DEMOLITION



FORESTRY/LANDSCAPING



RAILWAY

